

EMG

RECYCLE



SCREEN DRUM

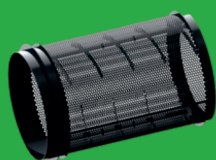
1300-2100

About ASCO SCREEN DRUM 1300-2100

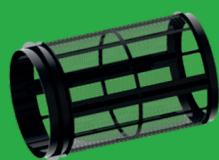
Drum screen is mounted on robust foldable construction and machine is semi-mobile. The process of sieving starts with the loading of material in the feed bunker from above. The separated material falls out from under the machine and on a funnel at the end of the machine (2 fractions).



Main Components &



STEEL



WIRE MESH

The compact ASCO Screen Drum 1300-2100 offers a robust and powerful basis for a wide range of sieving tasks. The machine is particularly impressive for smaller companies and recycling yards, in which many types of materials have to be processed in tight time windows. The ASCO Screen Drum 1300-2100 separates coarse parts and tufts of chips, waste wood, sand, gravel, plastic and similar materials.



1

4



6



5

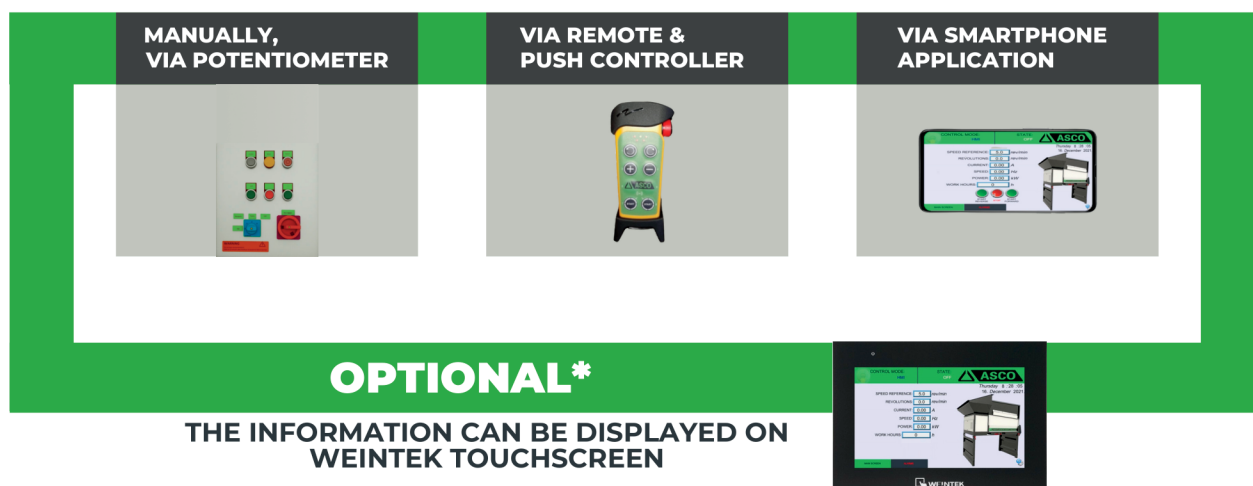


ADJUST THE SPEED

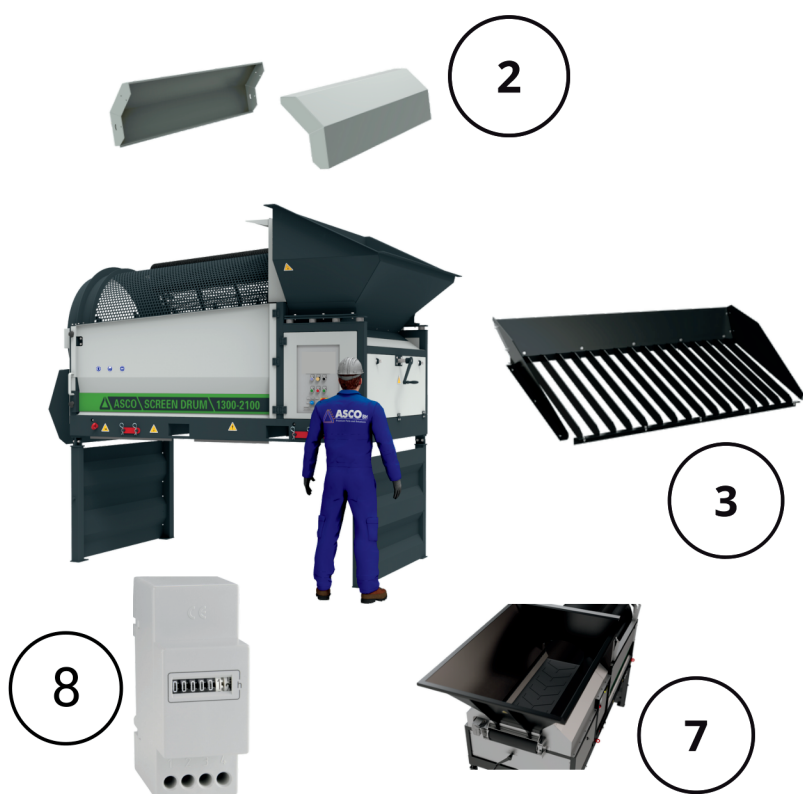
The machine is equipped with an adjustable drum speed which allows you to adjust the speed of process of separation according to your needs.

The Screen Drum is available in a round configuration with a size of the opening defined by the customer (from d10 to d100mm).

CONTROL THE MACHINE IN DIFFERENT WAYS



Machine Options



MACHINE OPTIONS

- 1 - Extended drum
- 2 - Protective cover
- 3 - Additional funnel grid
- 4 - Motor 5 kw or 7.5 kw
- 5 - Barrier
- 6 - Adjustable holders
- 7 - Basic version 1.1 m³;
version with conveyor 2.0 m³
- 8 - Hour meter (if control panel doesn't have display)

REPLACE DRUM FAST AND EASY

Loose 6 screws and slide the feed bunker by turning the handle clockwise

Remove the rod clevis on both side of the brush and pull the brush to the back.

Lift the top cover

Unscrew two knobs placed on the side and use handle to open the machine

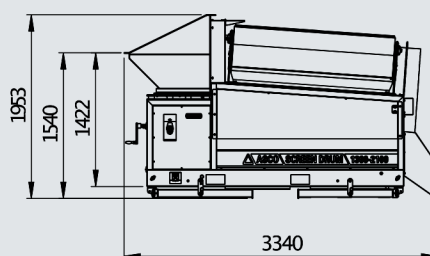
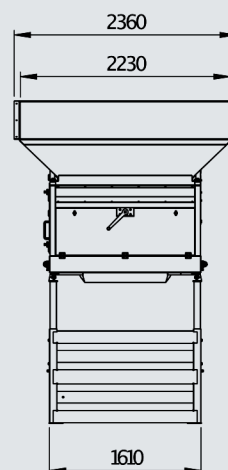
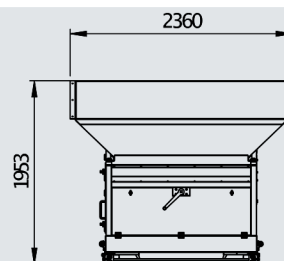
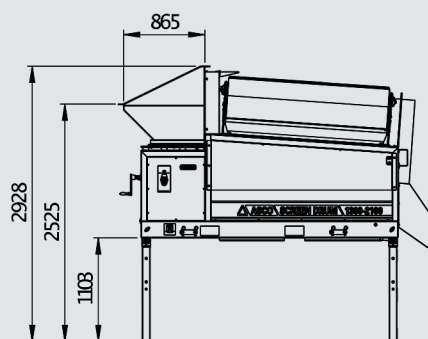
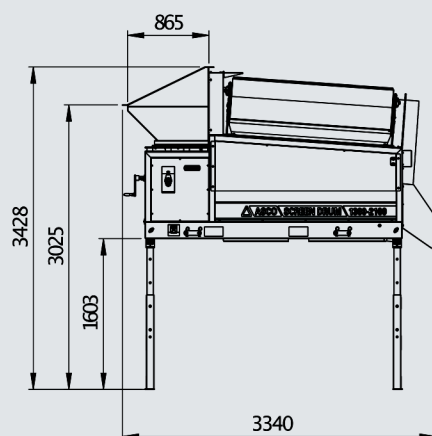
Remove the existing drum

Insert the new one



Technical Specifications & Measurements

Sieve length: 2.10 m
Usable sieve length: 1.70 m
Sieve drum outside diameter: 1.30 m
Usable screen surface: 7.0 m²
Screening capacity: 5-50 m³/h
Punching diameter: Ø6 mm-Ø100 mm
Hopper opening: 2000 mm x 850 mm
Turnings (adjustable): 5 rpm – 20 rpm
Driving power: 5.5 or 7.5 kW
Footprint: 3.3 x 2.13 m
Filling height: 2.93 m
Weight: 1500 kg



EMG
RECYCLE